

The PREPaRE School Crisis Prevention & Intervention Curriculum



The NASP PREPaRE Curriculum provides school-based mental health professionals and other educational professionals with training on how to best fill crisis team member roles and responsibilities in terms of the four stages of crisis management: (a) prevention, (b) preparedness, (c) response, and (d) recovery. The curriculum incorporates foundation knowledge provided by the U.S. Departments of Education (2003) and Homeland Security (2004), as well as the Incident Command System delineated by the National Incident Management System (NIMS).

The PREPaRE model emphasizes the following hierarchical and sequential set of activities:

P—Prevent and prepare for psychological trauma

R—Reaffirm physical health and perceptions of security and safety

E—Evaluate psychological trauma risk

P—Provide interventions
a—and

R—Respond to psychological needs

E—Examine the effectiveness of crisis prevention and intervention

School Crisis Response

The PREPaRE curriculum has been developed by the National Association of School Psychologists (NASP) as part of NASP's decade-long leadership in providing evidence-based resources and consultation related to school crisis prevention and response. Schools play a critical role in meeting the needs of students, staff, families, and often the local community related to crisis. They must have crisis plans and trained teams in place to serve this function effectively within the unique context of the school culture. PREPaRE is the only comprehensive nationally available curriculum developed by and for school-based professionals with firsthand experience and formal training. PREPaRE training is ideal for schools committed to improving and strengthening their school crisis management plans, emergency response, and recovery capacities.

For more information or to have your school district or organization arrange for PREPaRE training, contact Dr. Ted Feinberg, NASP Assistant Executive Director, by e-mail at tfeinberg@naspweb.org or by phone at (866) 331-NASP, or visit www.nasponline.org/prepare



**NATIONAL
ASSOCIATION OF SCHOOL
PSYCHOLOGISTS**

4340 East West Highway, Suite 402
Bethesda, MD 20814
(301) 657-0270
(866) 331-NASP, toll free
(301) 657-0275, fax
(301) 657-4155, TTY
www.nasponline.org

School Crisis Prevention and Intervention Training Curriculum



Schools play a critical role in meeting the crisis prevention and response needs of students, staff, families, and the local community.

The PREPaRE training curriculum includes two core workshops—(1) Prevention and Preparedness and (2) Crisis Intervention and Recovery and two Training of Trainer (ToT) workshops. Workshop 1 and 2 can be taken separately and are prerequisite to ToT participation.

WORKSHOP 1

Prevention and Preparedness: The Comprehensive School Crisis Team

This 1-day workshop provides school-based mental health professionals, administrators, security professionals, and other educators with an understanding of the comprehensive school crisis team and their roles on these teams. The workshop emphasizes the systems issues relevant to the prevention and preparedness elements of PREPaRE. It addresses the importance of preventing and responding to crises within the structure of a comprehensive, multidisciplinary school crisis team using the Incident Command System (ICS); ways to create safe, effective and responsive school environments to prevent crises; and how to prepare for crises by developing, exercising, and evaluating plans.

WORKSHOP 2

Crisis Intervention and Recovery: The Roles of School-Based Mental Health Professionals

This 2-day workshop provides school-based mental health professionals, relevant administrators, and community providers with the knowledge needed to meet the needs of students and staff following a school associated crisis event. Specifically, the workshop covers how school-based mental health professionals serving on a crisis team should be involved in a hierarchical and sequential set of activities that (a) prevent and prepare for psychological traumas, (b) help to reaffirm the physical health of members of the school community and students' perceptions that they are safe and secure, (c) evaluate the degree of psychological trauma, (d) respond to the psychological needs of members of the school community, and (e) examine the effectiveness of school crisis intervention and recovery efforts.



PREPaRE Developers/Core Trainers

These individuals are leading national experts in school crisis prevention and response. In addition to formal training, core PREPaRE trainers have direct experience designing and implementing crisis plans and responding to crises ranging from school shootings and suicide to terrorism and natural disasters. PREPaRE developers include: *Melissa A. Reeves, PhD, NCSP, Winthrop University, Rock Hill, SC; Stephen E. Brock, PhD, NCSP, California State University-Sacramento, CA; Ted Feinberg, EdD, NCSP, NASP, Bethesda, MD; Shane Jimerson, PhD, NCSP, University of California, Santa Barbara, CA; Richard A. Lieberman, MA, NCSP, Los Angeles Unified School District, CA; Amanda B. Nickerson, PhD, NCSP, University at Albany, NY*



TRAINING OF TRAINERS WORKSHOPS 1 & 2

PREPaRE Training of Trainers Workshops are designed to provide workshop participants with the information and practice needed to become NASP PREPaRE workshop trainers. *Participants are required to have completed the corresponding core workshop before completing either ToT workshop.* All participants will receive workshop presentation materials and a certificate of completion. ToT workshops being offered include:

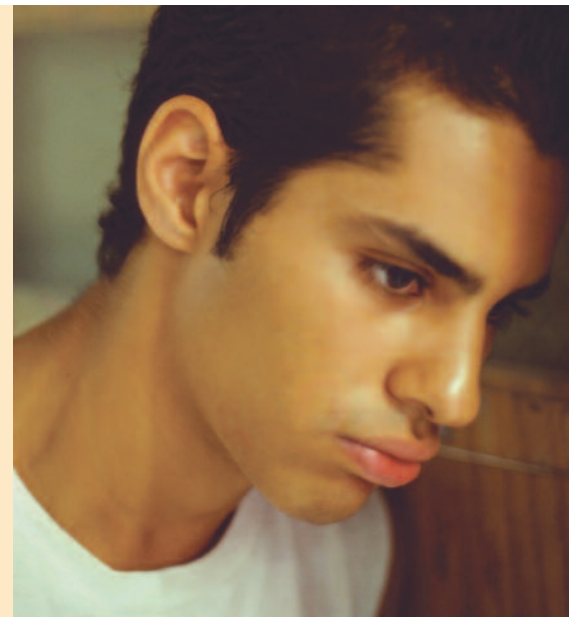
WORKSHOP 1

Training of Trainers (ToT): Crisis Prevention and Preparedness: The Comprehensive School Crisis Team
4-hour session

WORKSHOP 2

Training of Trainers (ToT): Crisis Intervention and Recovery: The Roles of School-Based Mental Health Professionals
12-hour session

(A list of individuals who have completed ToT workshops and are available to provide PREPaRE trainings, is available through NASP.)



PREPaRE Materials

Workshop participants receive a set of curriculum materials provided in booklet and CD format. Participants may use these resources for informal in-service staff training but may not represent them as formal PREPaRE training unless they have successfully completed the Training of Trainers workshop(s).